

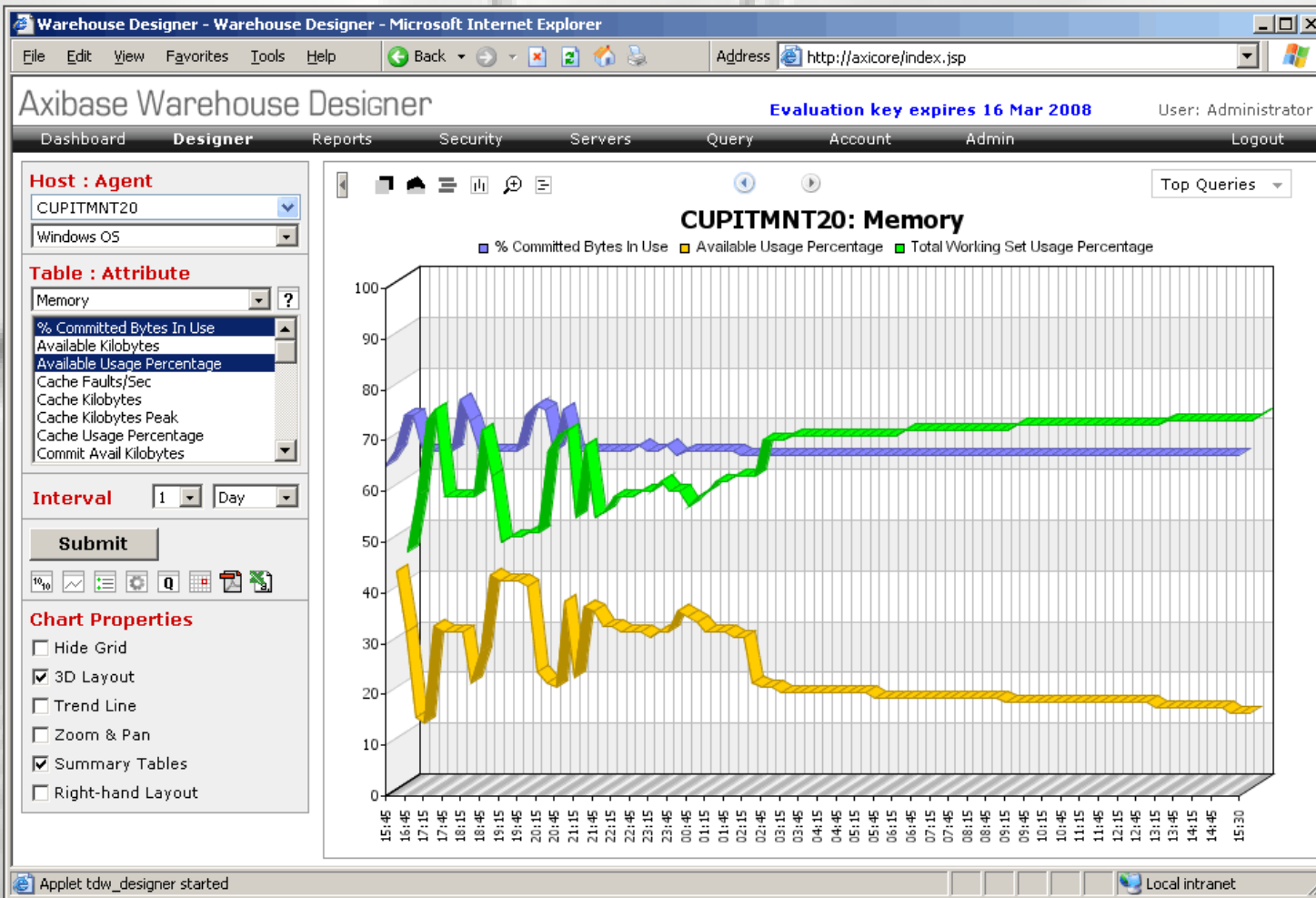


# **Axibase Warehouse Designer**

New capabilities for ITM 6.2

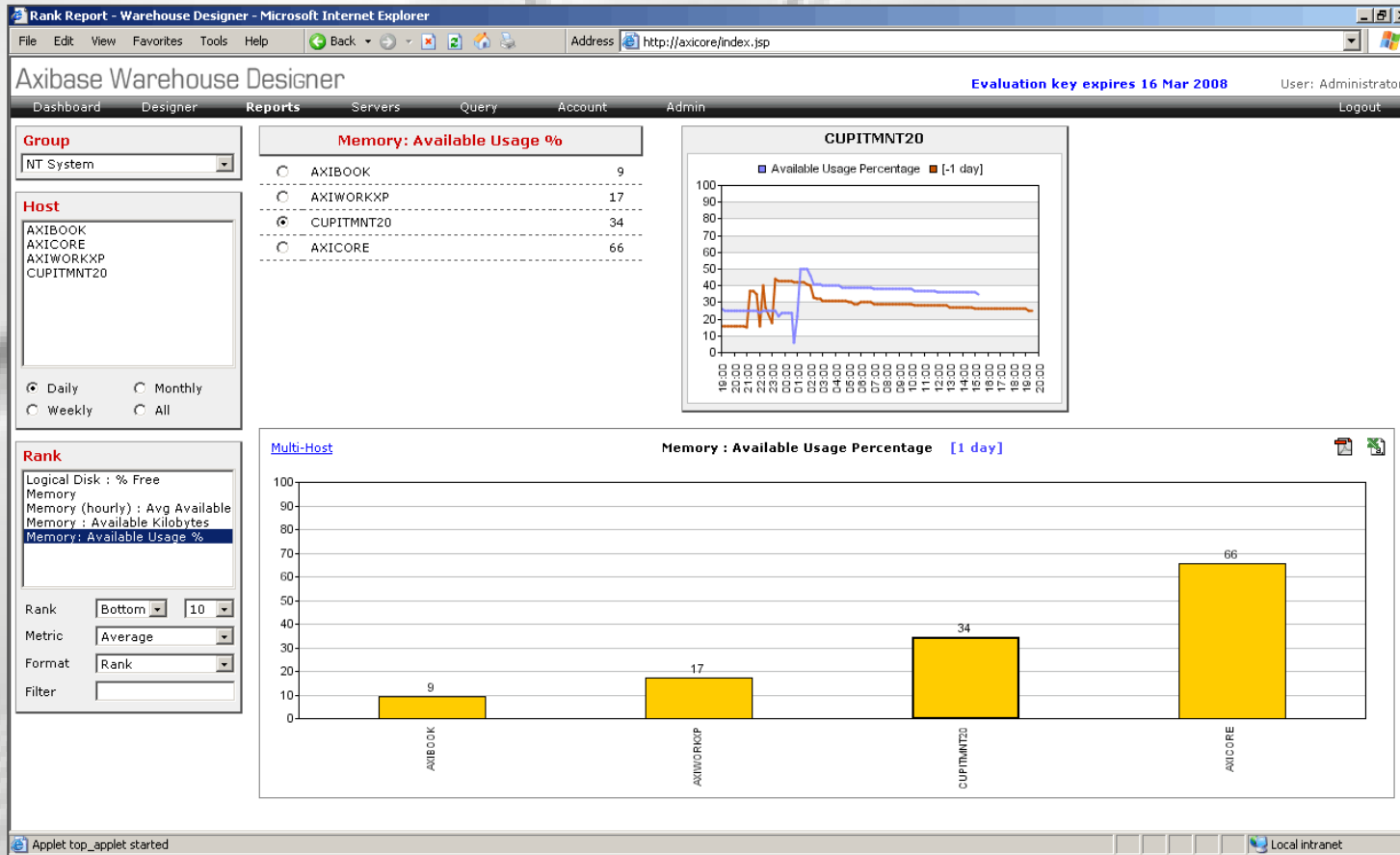
# New Agent Attributes – Ad Hoc View

- Memory usage reports for Windows (% of total physical memory)



# New Agent Attributes – Rank View

- Ranking of servers by % available memory



# New Agent Attributes – Snapshot

- New tables such as Computer\_Information, Processor\_Information, Network\_Port provide data for new situations as well as the ability to target virtual and physical servers with customized reports

The screenshot displays a web application interface with two overlapping windows. The primary window shows the 'Computer Information' table, and a secondary window shows the 'Processor Information' table.

**Computer Information Table:**

| Attribute                   | Value                           |
|-----------------------------|---------------------------------|
| Computer System Description | Computer System Product         |
| Computer ID Number          | VMware-56 4d e6 17 48 e3 db ... |
| Computer Name               | VMware Virtual Platform         |
| Computer UUID Number        | 17E64D56-E348-75DB-71D5-5D...   |
| Computer Vendor             | VMware, Inc.                    |
| Computer Version            | None                            |
| Computer Hostname           | CUPITMNT20                      |
| Computer Domain Name        | cupitmnt20.vm2.axibase.com      |

**Processor Information Table:**

| Socket Designation       | CPU socket #0                  | CPU socket #1                 |
|--------------------------|--------------------------------|-------------------------------|
| Processor Name           | Intel(R) Pentium(R) D CPU 3... | Intel(R) Pentium(R) D CPU ... |
| Processor Manufacturer   | GenuineIntel                   | GenuineIntel                  |
| Processor Description    | x86 Family 15 Model 6 Step...  | x86 Family 15 Model 6 Ste...  |
| Power Management Support | False                          | False                         |
| Processor ID             | 0FEBBBFF00000F68               | 0FEBBBFF00000F68              |
| Processor Version        | Model 6, Stepping 4            | Model 6, Stepping 4           |

# Workspace Symbols

- Support for \$NODE\$ symbol in browser view enables programmatic integration of TEPS workspaces with third-party tools such as AWD
- Example: agent-level Reports workspace in TEPS providing access to scheduled reports in AWD

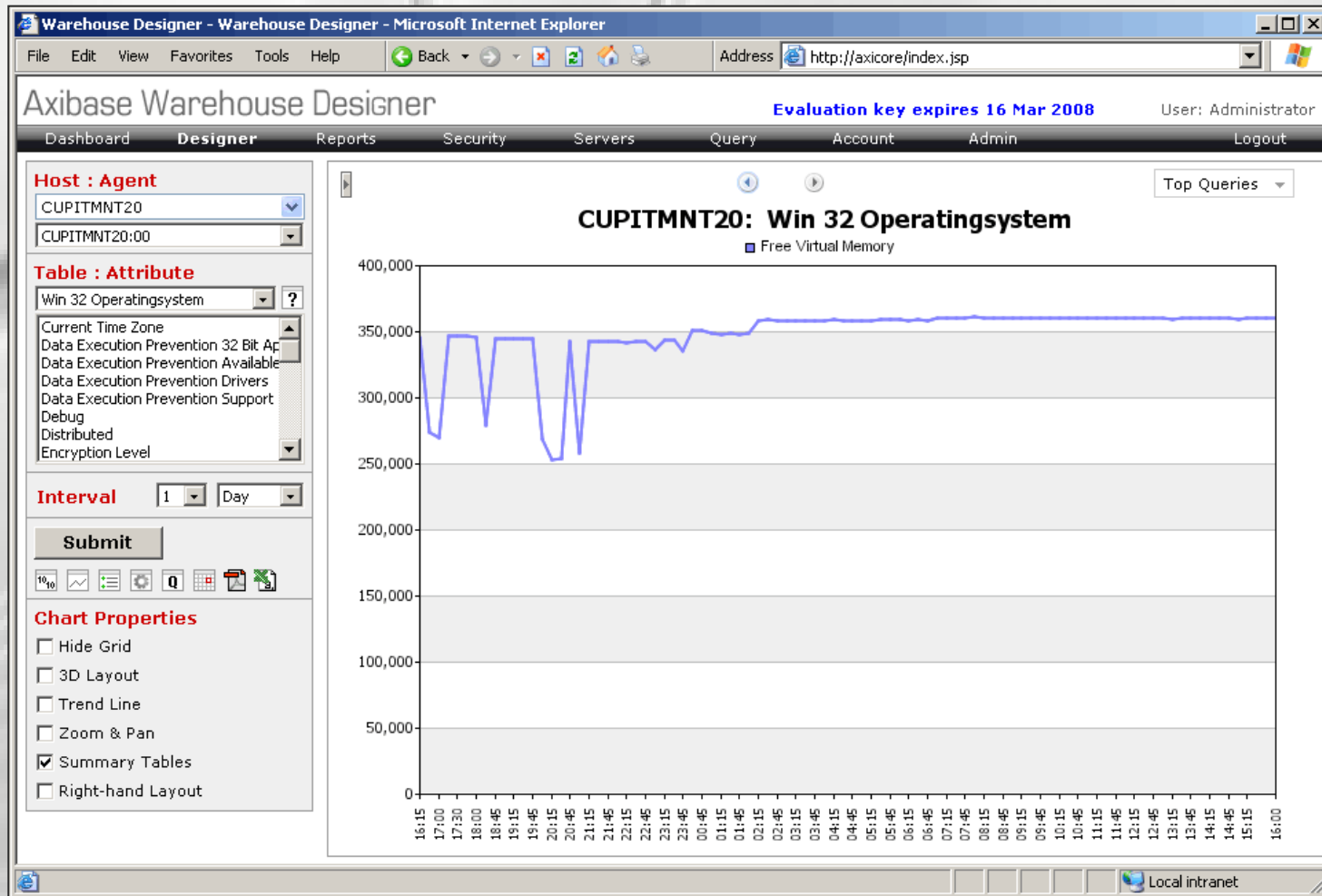
The screenshot displays the TEPS interface with several key elements highlighted:

- Browser View:** The address bar shows the URL `http://axicore/pub/whapi.srv?method=getTemplatePage&agent=Primary:AXICORE.NT`. An annotation states: "\$NODE\$ is resolved by TEPS to actual agent name in the API request".
- Navigator:** A tree view on the left shows the hierarchy: Enterprise > Windows Systems > AXIBOOK > Win32\_Account Agent > Win32\_OperatingSystem Ag > Windows OS > AXICORE > Win32\_OperatingSystem Ag > Windows OS. A context menu is open over the 'Windows OS' node, with 'Historical Reports' selected. An annotation says: "Easily create Reporting workspace for all agents".
- Properties - Historical Reports:** A dialog box is open, showing the 'Style' section. The 'Home' field contains the URL `http://axicore/pub/whapi.srv?method=getTemplatePage&agent=$NODE$`. An annotation explains: "Use \$NODE\$ symbol to create a generic workspace".
- Reports:** The main area displays two line graphs: 'Memory : Available Kilobytes' and 'Memory (hourly) : Avg Available Kilobytes'. Below them is a 'Logical Disk : % Free' section with a line graph.

The status bar at the bottom indicates the Hub Time is Thu, 12/20/2007 08:07 PM, the server is available, and the current workspace is 'Historical Reports - CUPITMNT20 - SYSADMIN'.

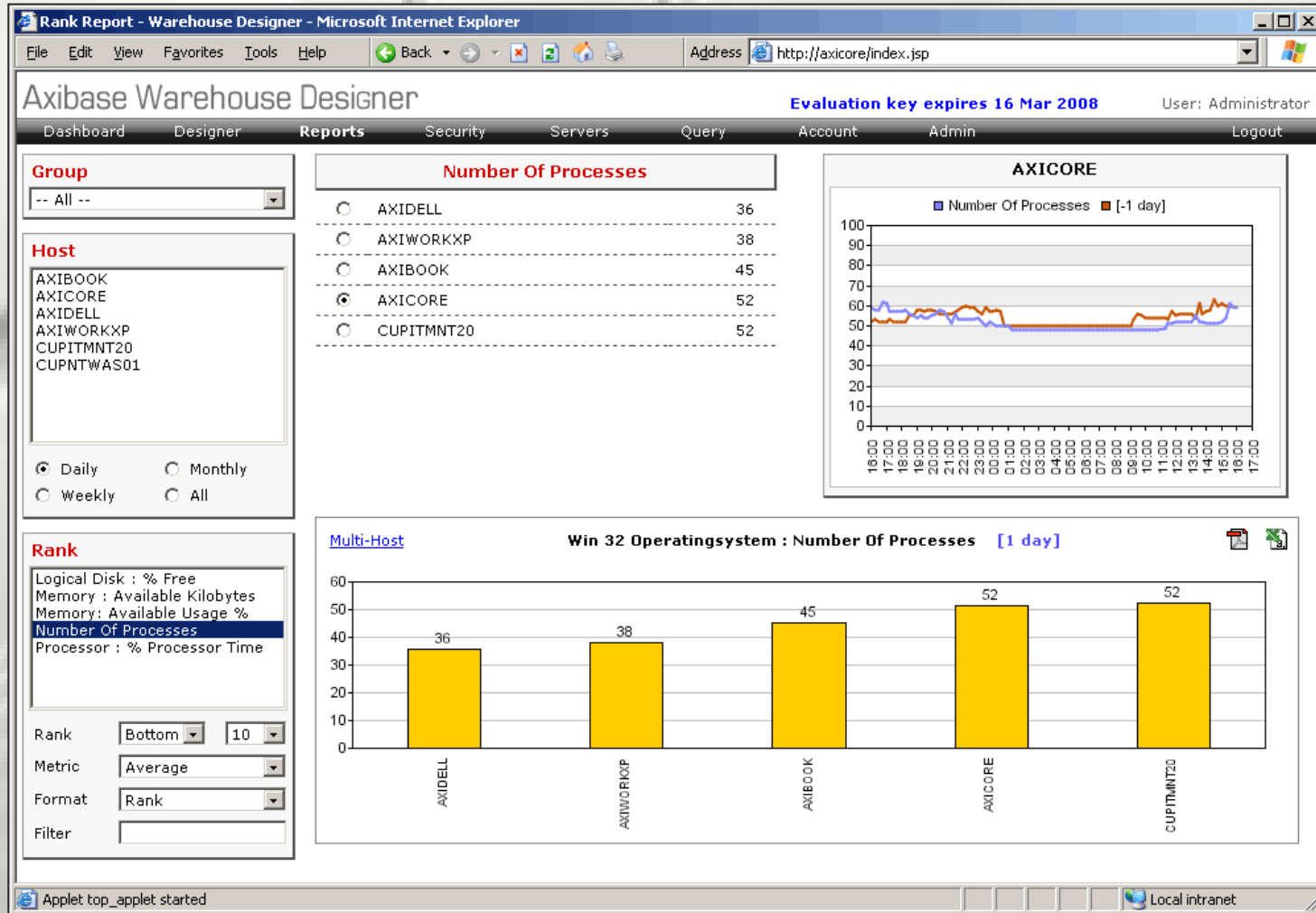
# Custom Agents: Auto-Discovery

- Agent Builder for ITM 6.2 simplifies the process of creating and maintaining custom agents
- AWD automatically discovers custom (Kxx) agents and allows users to easily create custom reports



# Custom Agents: Ranking

- Example: Ranking of custom agents by average attribute value (also percentiles and forecasts)



# Resources

- ITM6.2/6.1 attribute difference reports: <http://www.axibase.com/tivoli/itm6.2.htm>
- IBM Tivoli Monitoring 6.2 Differences <http://www.ibm.com/support/docview.wss?uid=swg27011415>
- TDW 6.2 Differences: <http://www-1.ibm.com/support/docview.wss?uid=swg21290300>
- Axibase Warehouse Designer evaluation software: [http://www.axibase.com/eval\\_awd.htm](http://www.axibase.com/eval_awd.htm)