



## KEY CAPABILITIES

- Out-of-the-box support for all OS, database, and application agents in ITM 6.1
- Historical and real-time charts based on any table or user-defined view in TDW
- Single-click interface for creating template reports from ad hoc charts
- Top N reports for multiple agents with a customizable target list
- User-configurable chart options, including 3-D layout, zooming, and trend lines
- PDF report distribution using flexible email scheduling options
- Single Sign-On with TEPS credentials

## BENEFITS FOR REPORT USERS

- Create complex charts and reports in seconds using drop-down lists
- SQL programming or report development skills are not required
- Quick and easy access to frequently used reports through personalized dashboards
- Lightweight, cross-browser user interface for access anywhere, anytime

## BENEFITS FOR ITM ADMINISTRATORS

- Built-in web server and database simplify AWD installation and maintenance
- Integration of custom reports with TEPS workspaces using HTTP API

## LEADING REPORTING AND GRAPHING TOOL FOR ITM 6.1

Warehouse Designer is a web-based solution for creating and viewing time-series charts and top N reports based on performance statistics in the Tivoli Data Warehouse v. 2.1 (TDW). By integrating an auto-discovery engine with an easy-to-use query-by-example modeler, Axibase Warehouse Designer enables users to quickly create interactive charts and access predefined reports without the cost and complexity of traditional reporting tools.

## Warehouse Designer Interface And Features

*Historical Charts (TDW)*

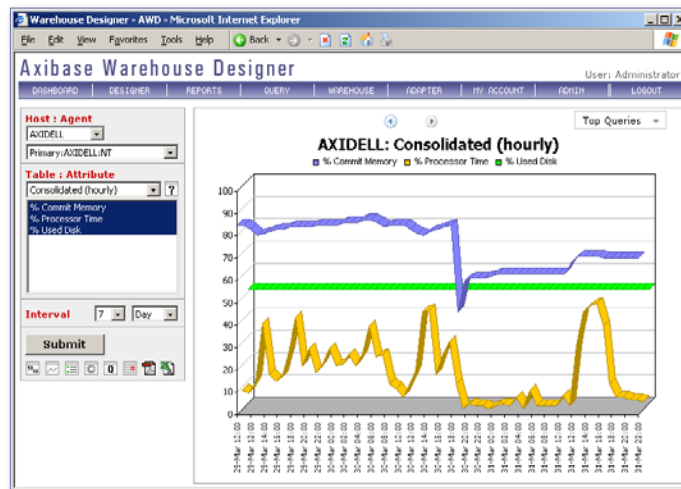
*QBE Modeler*

*Real-time Charts (TEMS)*

*Statistics*

*Agent Attributes*

*Raw Data*



*Dashboards*

*PDF/CSV/Excel Export*

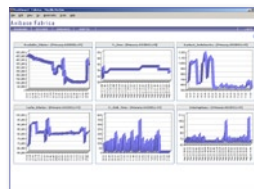
*HTTP API*

*100+ Custom Properties*

*3-D Layout*

*Scrolling & Zooming*

*Personalized Dashboards*



*Warehouse Health Reports*



*Trending and Analysis*

