

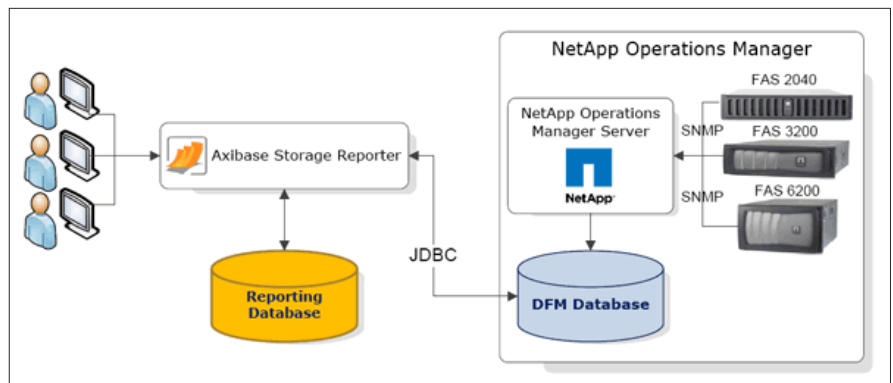
KEY CAPABILITIES

- Dedicated reporting solution for NetApp storage systems
- Physical and logical utilization, efficiency, and asset reports
- User-friendly web-based interface
- Deep drill-down from Enterprise level into storage system details
- Configuration information on filers, vFilers, aggregates, disks, shelves, volumes, LUNs, and snapshots
- Implementation of NetApp storage system object model
- Export reports in CSV format to disk or via email on schedule
- Import filer properties from CSV files or CMDB database
- LDAP integration, group- and role-based access controls
- Seamless integration with NetApp Operations Manager
- Backward compatibility down to NetApp Data Fabric Manager, v 3.8
- No need to deploy agents on monitored storage systems
- Installs and configures in less than 30 minutes. No training required.

POWERFUL STORAGE REPORTING TOOL

Axibase Enterprise Reporter is a powerful reporting solution designed specifically for NetApp storage systems. The product integrates seamlessly with NetApp-Operations Manager and provides an easy-to-use interface to view, analyze and optimization storage resource allocations, even for the largest storage environments.

ARCHITECTURE



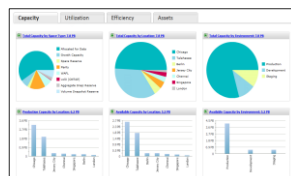
BENEFITS

- Quickly view and analyze storage usage and utilization at the Enterprise level.
- Identify top storage consumers by location, environment, data center and other custom parameters.
- Provide better decision making support for future expansion projects using built-in growth forecasts.
- Optimize allocation efficiency and NetApp best practice compliance.
- Provide systems administrators, application owners, and IT management a read-only access to detailed storage configurations.

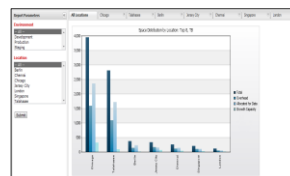
CAPACITY REPORTS



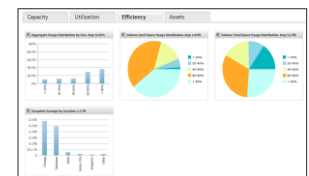
UTILIZATION REPORTS



EFFICIENCY REPORTS



ASSET REPORTS



REQUIREMENTS

1. Hardware

Environment	< 10 Filers	< 100 Filers	> 100 Filers
Processor	1 CPU, 2+ GHz	1 CPU, 2+ GHz	2 CPU, 2+ GHz
Memory	1 GB (512MB for JVM)	2 GB (756 MB for JVM)	2 GB (1 GB for JVM)
Disk Space	200 MB for app. files 100 MB for log files 512 MB for report files	200 MB for app. files 250 MB for log files 1 GB for report files	200 MB for app. files 500 MB for log files 3 GB for report files

2. Operating Systems

- Windows Server 2003, SP 2+
- Windows Server 2008
- Red Hat Enterprise Linux, 4+
- SUSE Linux Enterprise Server, 9
- AIX 6.1+

3. Applications

- NetApp Data Fabric Manager 3.8+
- NetApp Operations Manager, all releases

4. Web Browsers

- Internet Explorer 7.x, 8.x, 9.x
- Mozilla Firefox 3.x
- Google Chrome 3.x+

ABOUT US

Founded in 2004, Axibase is a proven leader in performance analysis and capacity planning for the enterprise. Our flagship customers include CSC, Farmers Insurance, Zurich Insurance, NetApp, ING Bank, Suncorp, Experian and many other best-in-class companies across the world.

© 2011 Axibase. All Rights Reserved.

CONTACTS

Axibase Corporation
19925 Stevens Creek Blvd.
Cupertino, CA 95014 USA

Phone: 408.973.7897
Fax: 408.725.8885
www.axibase.com